

# The Spectacular South Coast



VisitBritain



VisitEngland

Supported by VisitBritain / VisitEngland  
through the Discover England Fund

# The Spectacular South Coast

From the Port of Southampton, a whole world of unique and memorable attractions encompassing history and heritage dating back 1000 years awaits. There's so much for cruise passengers to discover – all within an hour of the Port. This guide will offer great scope for putting together memorable and unique half day, full day excursions and new experiences – in fact, you're spoilt for choice.



# Welcome to Hampshire

**Southampton is known as the cruise capital of Europe and for good reason, the city welcomes over 2 million cruise passengers a year.**

Most passengers will arrive at Southampton unaware of the wealth of fascinating heritage or special experiences that are available to them within a relatively small radius.

We have put together a vast array of interesting and memorable experiences to help you create innovative and unique excursions for the most discerning cruise passenger.

History and heritage are found within minutes of the port and all destinations in our guide within 40 miles or one hour's driving distance. Also included are some ideas for pre- and post-cruise excursions to make the most of their visit.

A guided tour is the most interesting and enjoyable way to explore a destination as it brings to life the place, the people and its history.

There is an excellent choice of knowledgeable guides in the towns and cities of Hampshire and at many attractions. Venues, recognising the value of overseas visitors, look to meet their needs by offering printed information or audio in several languages.






From our research, you have told us that flexibility is the key to making a unique excursion, so look out for (☆) on the entries. This indicates the attraction is willing to help you customise your tour to the needs of your clients and create a tailor-made experience.

**Please enjoy exploring the many different reasons to visit Hampshire.**

For further information on the Leisure Excursions for Cruise & Conference project please contact Laura Campbell: [laura@lauracampbell.biz](mailto:laura@lauracampbell.biz)

---

## Contents

Maritime and Military heritage	5	
Historic Buildings and Gardens	17	
Map	28	
Literary heritage	31	
Hampshire food and drink experiences	39	
Activities	47	
Suggested excursions	53	
Key	55	

Here in the South, some of the most important sea faring and battle stories are brought to life for visitors from all over the world. From the pioneering journey to America of the Pilgrim Fathers aboard The Mayflower in 1620 to planning of the World War II D-Day Landings in 1944, there's plenty of opportunity to put together historical excursions which span centuries.





# Maritime and Military heritage

## Southampton

### SeaCity Museum

This innovative, state-of-the-art museum focuses on Southampton and its connection with the sea. There are 3 fascinating permanent exhibitions – Southampton's Titanic Story, Gateway to the World and Southampton Stories. The Titanic Story includes a 1:25 scale interactive model of the ill-fated cruise liner. The Gateway to the World exhibition cover 200,000 years of history from the earliest settlers in Southampton to the people living in the city today.

The newest exhibition depicts the city's maritime and local heritage including archaeology and archive collections.

A Tour of the Clock Tower can be arranged for small groups. Printed information available in Spanish, Italian and German. Group size minimum 10 maximum 30.

Tel: +44 (0)23 8083 4536

Email: [museums@southampton.gov.uk](mailto:museums@southampton.gov.uk)  
[www.seacitymuseum.co.uk](http://www.seacitymuseum.co.uk)



SS Shieldhall

### SS Shieldhall

The Shieldhall is the country's oldest passenger-cargo steamship. As a member of the National Historic Fleet, she serves as a sea going tribute to Britain's maritime heritage. Passengers get the chance see the impressive engine room with its original steam engines, traditional instruments and the assisted steering gear (similar to that of The Titanic). SS Shieldhall can be privately hired and also offers full day tours including guided tours on land with a 2-3 hours cruise along the Solent. Opening season May-Sept. Group size minimum 10 maximum 200.

Tel: +44 (0)844 357 2329

Email: [tickets@ss-shieldhall.co.uk](mailto:tickets@ss-shieldhall.co.uk)  
[www.ss-shieldhall.co.uk](http://www.ss-shieldhall.co.uk)



## God's House Tower, Southampton

God's House Tower is a new art and heritage experience in Southampton. Recently restored in a £3 million refurbishment project, the iconic 13th century building is now home to three exhibition spaces.

Visitors can enjoy rooftop views across the city, immerse themselves in the 'Stories Behind the Stones,' visit the contemporary and period art galleries.

Guided tours, performances and supper in the Long Gallery. Mayflower exhibit and Pilgrim Suppers in 2020. Leaflets available in foreign languages.

Tel: +44 (0)23 8033 8778  
Email: [rachel@spacearts.org.uk](mailto:rachel@spacearts.org.uk)  
[www.godshousetower.org.uk](http://www.godshousetower.org.uk)



## Buckler's Hard, New Forest

On the banks of the Beaulieu River, is the peaceful haven of Buckler's Hard.

Originally founded as a free port for the trading of sugar, this village became a thriving shipbuilding location in the 18th century where 3 ships for Nelson's fleet which took part in the Battle of Trafalgar were built. Discover the history of the village in the Maritime Museum and take a step back in time inside a historic shipwright's cottage. Buckler's Hard also played a big part in the build up to the D-Day landings with many craft and thousands of Army and Navy personnel gathered in the area in preparation for a pivotal moment in World War II. Group size Minimum 15.

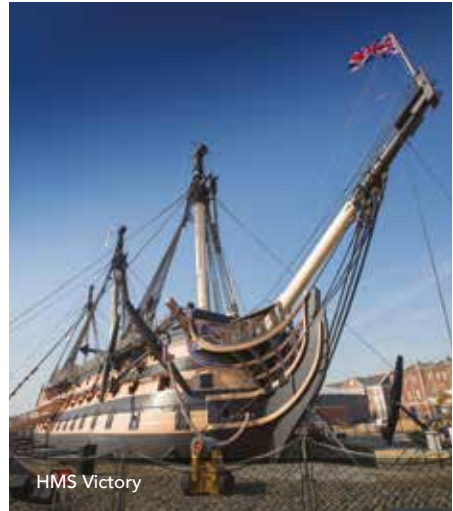
Tel: +44 (0)1590 614645  
Email: [groups@bucklershard.co.uk](mailto:groups@bucklershard.co.uk)  
[www.bucklershard.co.uk](http://www.bucklershard.co.uk)



## Portsmouth Historic Dockyard

Visit Portsmouth Historic Dockyard and step on-board the stunning historic ships Nelson's HMS Victory and Queen Victoria's HMS Warrior 1860 – the first iron-hulled armoured battleship, and discover the Royal Navy, past, present and future. Here, there are 11 maritime and military attractions in one location. Group size minimum 10 maximum 30.

Tel: +44 (0)23 9283 9766 (option 3)  
 Email: [phd.groups@nmrn.org.uk](mailto:phd.groups@nmrn.org.uk)  
[www.historicdockyard.co.uk](http://www.historicdockyard.co.uk)



HMS Victory

## The Mary Rose, Portsmouth

View the only 16th century warship on display anywhere in the world and brought to life with cutting edge technology and thousands of artefacts. Discover the events of 19 July 1545 – the day Henry VIII's flagship, the Mary Rose was lost. She was raised from the sea bed in 1982 and now stands at Portsmouth Historic Dockyard.

Group size Min 15 Guided tour Min 4  
 Max 24. Free audio guide via Mary Rose App in English, French, German, Italian, Polish, Spanish, Mandarin and Japanese. Printed guide in French, German, Italian, Polish, Spanish, Russian and Chinese.

Tel: +44 (0)23 9281 2931  
 Email: [groups@maryrose.org](mailto:groups@maryrose.org)  
[www.maryrose.org](http://www.maryrose.org)



The Mary Rose stern view (©Mary Rose Trust)

## Explosion Museum of Naval Firepower

The story of naval warfare is told in dramatic style at Explosion!, an award winning interactive museum housed in the Royal Navy's former Ordnance Depot at Priddy's Hard, centred around the powder magazine (a gunpowder store) designed in 1771. Displays explore the 18th century origins of Priddy's Hard, its historic buildings and the human story of the designers,

makers, seamen and thousands of female munitions workers who worked with these armaments over the centuries. Group size minimum 15.

Tel: +44 (0)23 9283 9766 (option 3)  
Email: [phd.groups@nmrn.org.uk](mailto:phd.groups@nmrn.org.uk)  
[www.historicdockyard.co.uk](http://www.historicdockyard.co.uk)



HMS Alliance at Royal Navy Submarine Museum

## Royal Navy Submarine Museum

The Royal Navy Submarine Museum tells the story of the Royal Navy's submarine service.

The Royal Navy Submarine Museum is set on the submarine service's 20th century base on the Gosport side of Portsmouth Harbour, the museum is home to the Royal Navy's very first submarine Holland 1 and the only surviving Second World War-era submarine remaining in the UK, the mighty HMS Alliance. Visitors have the opportunity to walk on-board HMS

Alliance and take a journey through every decade of her service.

Take a peek through the working periscopes, and see, hear and even smell how life was lived under the sea. Part accessible. Group size minimum 15.

Tel: +44 (0)23 9283 9766 (option 3)  
Email: [phd.groups@nmrn.org.uk](mailto:phd.groups@nmrn.org.uk)  
[www.historicdockyard.co.uk](http://www.historicdockyard.co.uk)





## The D-Day Story, Portsmouth

This is the only museum in the UK to tell the story of the historical D-Day Landings and the Battle of Normandy in World War II. Through authentic objects and brilliant audio-visual displays, learn the stories of those who took part in the D-Day Landings on June 6th 1944.

At the centre of the museum sits The Overlord Embroidery, which was commissioned by Lord Dulverton of Batsford as a lasting tribute to the sacrifice and heroism of the men and women who took part in Operation Overlord. A guided tour of Henry VIII's Southsea Castle, from where the King watched The Mary Rose sink, is a great addition to any excursion. Group size minimum 15 maximum 30.

Tel: +44 (0)23 8023 6789

Email: [mvs@portsmouthcc.gov.uk](mailto:mvs@portsmouthcc.gov.uk)

[www.theddaystory.com](http://www.theddaystory.com)



## D-Day Wall Map, Southwick House

In 1944, General Dwight D Eisenhower oversaw the D-Day operation in Southwick House. Visitors can view the famous Wall Map depicting the operation's progress, which has been preserved in its original position and set for H-Hour, D-Day.

Email: [DSPG-HQ-Information@mod.uk](mailto:DSPG-HQ-Information@mod.uk)

[www.theddaystory.com/markers/allied-naval-headquarters-southwick-house](http://www.theddaystory.com/markers/allied-naval-headquarters-southwick-house)



## Royal Armouries Fort Nelson, Fareham

This imposing Victorian fort is home to the Royal Armouries' national collection of artillery – The Big Guns. Fort Nelson was built in the 1860s as part of a defensive chain around Portsmouth and its vital Royal Dockyard.

It is probably the best surviving example of a Victorian fortress and has been restored to its original 19th-century state, together with parts of the World War II heritage.

The museum's displays trace the development of artillery from pre-gunpowder siege machines to modern-day super guns with over 350 on display. Fort Nelson is one of the few places where you can experience the power and noise of live artillery firings.

Tel: +44 (0)1329 848504

Email: [bookings@armouries.org.uk](mailto:bookings@armouries.org.uk)

[www.royalarmouries.org](http://www.royalarmouries.org)



Royal Armouries Fort Nelson, Fareham

## Army Flying Museum

The Museum holds an extensive collection charting over 100 years of the British Army in the air.

With over 40 fixed wing and rotary aircraft on display, the Museum is the perfect place to explore the fascinating history of army aviation.

The collection also contains smaller items such as uniforms, medals and equipment telling inspiring stories about the people involved in Army aviation. Group size minimum 10.

Tel: +44 (0)1264 781086  
Email: [marketing@armyflying.com](mailto:marketing@armyflying.com)  
[www.armyflying.com](http://www.armyflying.com)

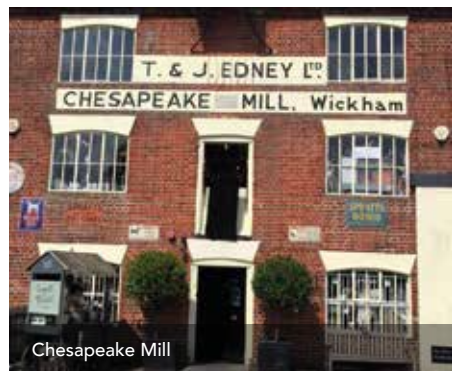


Army Flying Museum

## Chesapeake Mill, Wickham

Chesapeake Mill is of historical significance, constructed from timbers which came from the United States frigate Chesapeake. This ship was captured by the Royal Navy during the War of 1812. Nowadays, at Chesapeake Mill you will find a huge variety of traditional and vintage lifestyle accessories – perfect for unique mementoes from your holiday. The beautiful village of Wickham dates back to the Stone Age and later the Romans established a military post here. The first mention of the village of Wickham appears in a Royal Charter of 826 and later in the Domesday Book. Also, the church of St Nicholas in Wickham dates from 1126. The Mill's award-winning vegan café seats 24.

Tel: +44 (0)1329 834078  
Email: [info@chesapeakemill.co.uk](mailto:info@chesapeakemill.co.uk)  
[www.thechesapeakemill.com](http://www.thechesapeakemill.com)



Chesapeake Mill

## Places to eat

### The Golden Lion, Southwick

In 1944 nearby Southwick House became the HQ of the Normandy Invasion. This 16th century pub became the 'Unofficial Officers' Mess' where members of the planning staff including General Dwight D Eisenhower, General Montgomery and other senior commanders could relax over a beer. The adjacent Southwick Brewhouse is an excellent example of a Victorian home brewery.

A talk on the inn's associations with the planning of the D-Day landings can be arranged to personalise your visit.

Tel: +44 (0)23 9221 0437  
Email: sgoldringgoldenlion@gmail.com  
www.thegoldenlionsouthwick.co.uk



Mercure Southampton Centre Dolphin Hotel

### King Alfred, Winchester

A traditional pub just 10 mins walk from the city centre serving classic British pub lunches and real ale.

Tel: +44 (0)1962 854370  
Email: thekingalfredwinchester@gmail.com  
www.the.littlepubgroup.co.uk/the-king-alfred



### Gunwharf Quays

Located close to Portsmouth's key attractions and set in a cultural harbour front location, Gunwharf Quays is one of the South's leading shopping and leisure destinations. There is a choice of 30 restaurants, bars and coffee shops.

Tel: +44 (0)23 9283 6700  
Email: gwq-info@landsec.com  
www.gunwharf-quays.com



Gunwharf Quays

### Mercure Southampton Centre Dolphin Hotel

The Dolphin Hotel is an inn dating back to the 15th Century and the oldest hotel in Southampton. It is most famously known for where author Jane Austen, celebrated her 18th birthday.

Tel: +44 (0)23 8038 6460  
Email: H7876-SL@accor.com  
www.dolphin-southampton.com





## Grand Café, Southampton

This Grade II listed building opened as the grand South Western Hotel in 1872. Today visitors can dine in the original Wedgewood Ballroom, the Grand Café's main restaurant, which was used by first class passengers of The Titanic.

The building has hosted many distinguished guests notably Winston Churchill and Dwight Eisenhower during World War II. The mural by A Scott-Moncrieff on canvas in the Summer Dining Room, depicts the Pilgrim Fathers setting sail to the New World. Outside the building is still linked by a fine canopy of steel, to the original station terminus building. Large additions were made to the building in the 20th Century as the liner trade reached its peak.

Tel: +44 (0)23 8033 9303  
Email: [info@grand-cafe.co.uk](mailto:info@grand-cafe.co.uk)  
[www.grand-cafe.co.uk](http://www.grand-cafe.co.uk)



Grand Café, Southampton

## Dancing Man Brewery, Southampton

Located in a 14th century building, once a wool store and a prison during The Napoleonic Wars. This micro-brewery and restaurant offer all day dining in a fantastic period setting right on Southampton Quay. Minimum 15 Maximum 40.

Tel: +44 (0)23 8083 6666  
Email: [bookings@dancingmanbrewery.co.uk](mailto:bookings@dancingmanbrewery.co.uk)  
[www.dancingmanbrewery.co.uk](http://www.dancingmanbrewery.co.uk)



## White Star Tavern, Southampton

A bar and restaurant in lively Oxford Street was named after the White Star Shipping Line, the company which owned the ill-fated RMS Titanic. Many crew and passengers began their journeys at the tavern formerly known as The Alliance Hotel, the sign can still be seen on the outside of the building. Southampton was very heavily bombed in World War II but Oxford Street survived which is why the original buildings still stand.

Inside stood the offices where passengers of The White Star Line bought their tickets to board. When news of the Titanic disaster came in, the townsfolk gathered outside the White Star. Some of the dishes served today are taken from the last ever menu on the Titanic dated 14th April – the night before she was lost. Maximum capacity for dining 70.

Tel: +44 (0)23 8082 1990  
Email: [WhiteStar@fullers.co.uk](mailto:WhiteStar@fullers.co.uk)  
[www.whitestartavern.co.uk](http://www.whitestartavern.co.uk)



## Guided tours

### Sarah Siddons Fan Club Theatre Company theatrical tours

The Sarah Siddons Fan Club Theatre Company provides theatrical tours of old Southampton, visiting historical sites in the company of historical characters, who bring to life the people and stories from Southampton's past. The Company performs plays for private groups, themes include: In the Footsteps of the Pilgrim Fathers; Jane Austen & Southampton Spa. Also, street theatre performance on theme of Titanic.

Tel: +44 (0)787 1488 160  
Email: [info@sarahsiddonsfanclub.org](mailto:info@sarahsiddonsfanclub.org)  
[www.sarahsiddonsfanclub.org](http://www.sarahsiddonsfanclub.org)



Sarah Siddons Fan Club Theatre Company

### See Southampton

Entertaining and innovative tours including The Mayflower Story and Titanic Story by top award-winning guides. Or try Vaults and Vino, a visit to some of Southampton's underground vaults, followed by a wine-tasting at Dancing Man Brewery.

Tel: +44 (0)7770 842728  
Email: [info@seesouthampton.co.uk](mailto:info@seesouthampton.co.uk)  
[www.seesouthampton.co.uk](http://www.seesouthampton.co.uk)

### Southampton Tourist Guides Association

Bringing the stories of old Southampton alive since 1976, award-winning and qualified guides offer tours around historic buildings, walking tours, coach and courier services and provide advice on excursions.

Tel: +44 (0)23 8022 2482  
Tel: +44 (0)7748 335576  
Email: [southamptontouristguides76@gmail.com](mailto:southamptontouristguides76@gmail.com)  
[www.southamptontouristguides.com](http://www.southamptontouristguides.com)

---

### Mayflower Heritage Guides

Visit locations and recount the many interesting events and stories of the Mayflower and her passengers while in Southampton.

Tel: +44 (0)7500 330410  
Email: [info@mayflowerheritageguides.com](mailto:info@mayflowerheritageguides.com)  
[www.mayflowerheritageguides.com](http://www.mayflowerheritageguides.com)

---

### Portsmouth Tourist Guides

Tailor-made walks and guides tours including Nelson Walk and Talk and D-Day Walk.

Tel: +44 (0)23 9282 6722  
Email [guiding@portsmouthcc.gov.uk](mailto:guiding@portsmouthcc.gov.uk)  
[www.visitportsmouth.co.uk/things-to-do/guided-walks-and-talks](http://www.visitportsmouth.co.uk/things-to-do/guided-walks-and-talks)



HMS Warrior

Hampshire is home to some of the most important buildings in the history of the UK. Garden lovers will enjoy the stunning selection of gardens in Hampshire.





# Historic Buildings and Gardens

## Winchester Cathedral

One of the finest and largest medieval cathedrals in Europe, Winchester Cathedral has a history dating back 1000 years. Its magnificent architecture, priceless treasures and great works of art make for a very interesting visit. Winchester was England's ancient capital and is a city steeped in history. Find the resting place of kings, queens and bishops as well as the gravestone of much-loved author Jane Austen.

The Winchester Bible, a 12th century national treasure should not be missed. There are a wide range of special interest guided tours available including a 30 minute Highlights Tour.

Enjoy an exhilarating and unique Tower Tour with an experienced guide with magnificent views across Winchester and the county. Discover the ringing chamber, the great Cathedral bells and walk the full length of the nave roof with its huge wood beams. Afternoon tea can be taken in the Medieval Undercroft. Guided audio tours in English, French and German. Printed information available in English, German, French, Italian, Spanish, Portuguese, Dutch, Polish, Hungarian, Russian, Japanese and Chinese.

Tel: +44 (0)1962 857225

Email: [visits@winchester-cathedral.org.uk](mailto:visits@winchester-cathedral.org.uk)  
[www.winchester-cathedral.org.uk](http://www.winchester-cathedral.org.uk)



Winchester Cathedral

## God's House Tower, Southampton

God's House Tower is a new art and heritage experience in Southampton. Visitors can enjoy rooftop views across the city and Southampton Water, immerse themselves in the 'Stories Behind the Stones,' and visit the contemporary and period art galleries. Recently restored in a £3 million refurbishment project, the iconic 13th century building was a gatehouse forming the southeast cornerstone of the medieval walls. The nearby hospital, God's House, was founded in 1168 by Gervase le Riche as a refuge for poor travellers, and this is where the Tower gets its name from.

The French raid in 1338 created a need to reinforce the defences, and so, God's

House Tower became one of the earliest forts built specifically to carry cannon. Visitors can enjoy exhibitions inspired by the building's 700 year history and view the town as it was in 1620, when the Pilgrims left Southampton on the Mayflower ship.

Guided tours, performances and supper in the Long Gallery. Mayflower exhibit and Pilgrim Suppers in 2020. Leaflets available in foreign languages.

Tel: +44 (0)23 8033 8778.

Email: [rachel@spacearts.org.uk](mailto:rachel@spacearts.org.uk)

[www.godshousetower.org.uk](http://www.godshousetower.org.uk)



God's House Tower, Southampton

## Palace House Beaulieu, New Forest

The Beaulieu Estate offers 3 stunning attractions in one location. Take an hour-long tour with a guide in costume around Palace House Beaulieu. This is a 13th-century house which was originally part of Beaulieu Abbey – the ruins of which can still be seen.

The home of the Montagu family since 1538 following the Dissolution of the Monasteries, the House was extended during the 1800. It is now a fine example of a Victorian country home, adorned with family treasures, portraits, and memorabilia.

Surrounding this magnificent house, the gardens are diverse with a Victorian Flower Garden, Victorian Kitchen Garden, fine examples of topiary and sculptures and much more. Beaulieu is also the home of the National Motor Museum – the world-famous collection of over 250 cars, cycles and motoring memorabilia.

This fine collection includes the earliest motor carriages to classic family saloons and legendary Formula 1 cars.

Tel: +44 (0)1590 614645

Email: [groups@beaulieu.co.uk](mailto:groups@beaulieu.co.uk)

[www.beaulieu.co.uk](http://www.beaulieu.co.uk)



Palace House Beaulieu, New Forest

## Whitchurch Silk Mill

Whitchurch Silk Mill is the oldest working silk mill in the UK and has been producing the finest silk since 1817. The Mill has woven ribbons, serge, silk linings in 22 colours for Burberry and, during World War 2, silk for insulating cables. Later, the Mill wove black ottoman and satin for lining legal gowns. Visitors get a unique opportunity to explore traditional silk weaving using 19th century machinery. Group size minimum 10 maximum 50.

Tel: +44 (0)1256 892065

Email: [info@whitchurchsilkmill.org.uk](mailto:info@whitchurchsilkmill.org.uk)

[www.whitchurchsilkmill.org.uk](http://www.whitchurchsilkmill.org.uk)



## The Vyne, near Basingstoke

The fabulous imposing house was home to lords and ladies for five centuries. Over the years it's been visited by Tudor kings, been lived in by a Speaker for the House of Commons and sheltered Second World War evacuees. The magnificent gardens in nine hectares have been added to and maintained for over 400 years and can be toured with the Head Gardener. A Behind the Scenes evening tour to discover 14th century cellars and hidden Tudor attics is available.

Tel: +44 (0)1256 883858

Email: [theyvne@nationaltrust.org.uk](mailto:theyvne@nationaltrust.org.uk)

[www.nationaltrust.org.uk/the-vyne](http://www.nationaltrust.org.uk/the-vyne)



## Highclere Castle

This castle isn't just famous for being the setting for the highly acclaimed drama 'Downton Abbey' but is also steeped in history with connections to both World Wars. During the First World War, Almina, the 5th Countess of Carnarvon, transformed the Castle into a hospital, and patients began to arrive from Flanders in September 1914.

During the Second World War, the Castle briefly became a home for children evacuated from north London. Visitors can browse the Castle unguided but the main state rooms are staffed.

Printed information in Spanish and French is available in each room. Explore the wonderful gardens at your leisure.

The Egypt Exhibition is also not to be missed. 100 years ago, the Castle was the home of the 5th Earl of Carnarvon, who famously discovered the Tomb of the Egyptian Boy Pharaoh, Tutankhamun, in 1922 with his archaeological colleague, Howard Carter.

The themed exhibition of the discovery of Tutankhamun's tomb includes over 60 incredible replicas, wall paintings of the tomb and photographic archive. Browse the Gallery of images taken in the Egyptian Exhibition. Group size minimum 20. Restricted opening days.

Tel: +44 (0)1635 253210

Email: [theoffice@highclerecastle.co.uk](mailto:theoffice@highclerecastle.co.uk)  
[www.highclerecastle.co.uk](http://www.highclerecastle.co.uk)



Highclere Castle



## Chawton House

A quintessential Elizabethan manor house that once belonged to Jane Austen's brother, Edward. Jane Austen referred to this as the 'Great House' in her letters. Jane lived in a cottage on his estate which is now Jane Austen's House Museum where Jane enjoyed the most prolific period of her writing life. Maps of the house are available in most European languages. A tour of the house, a behind the scenes tour or a garden tour with the Head Gardener can be booked. Group size minimum 10-maximum 20.

Tel: +44 (0)1420 541010

Email: [groups@chawtonhouse.org](mailto:groups@chawtonhouse.org)

[www.chawtonhouse.org](http://www.chawtonhouse.org)



Chawton House

## Gilbert White and The Oates Collections, Selborne

Selborne and its surrounding landscape nestled in the South Downs National Park, inspired Gilbert White's life-long investigation of the natural world culminating in his world-famous book The Natural History and Antiquities of Selborne.

This fascinating property tells Gilbert White's story within the walls of his family home and garden. The late extensions to the house host the Oates Collections which celebrate the life of Victorian explorer Frank Oates and his nephew, Captain Lawrence Oates, who died heroically on Captain Scott's ill-fated Antarctic Expedition of 1911/12.

A special tour can include the chance to sample 'Gilbert White Gin' made using botanicals from the 18th century garden.

Group size minimum 10 maximum 15.

Tel: +44 (0)1420 511275

Email: [info@gilbertwhiteshouse.org.uk](mailto:info@gilbertwhiteshouse.org.uk)

[www.gilbertwhiteshouse.org.uk](http://www.gilbertwhiteshouse.org.uk)



Gilbert White and The Oates Collections

## Tudor House & Garden, Southampton

One of Southampton's most important historic buildings, revealing over 800 years of history in the heart of the old town.

Located in the area of the city where the Pilgrims would have lived whilst preparing the Mayflower and the Speedwell for their voyage. Highlights of the Tudor House include a World War II bunker, King John's Palace and a Norman House attached to the city wall defences.

Choose from a variety of special guided tours like Southampton's Old Town, Southampton Blitz and Haunted Tudor House. Printed information is available in Spanish, Italian, German, French, Polish, Mandarin and Chinese. Group minimum 10 maximum 30.

Tel: +44 (0)23 8083 4536

Email: [museums@southampton.gov.uk](mailto:museums@southampton.gov.uk)

[www.tudorhouseandgarden.com](http://www.tudorhouseandgarden.com)



Tudor House & Garden, Southampton

# Gardens

## Sir Harold Hillier Gardens

The award-winning arboretum is famous the world over, covering 72 hectares and accommodating over 42,000 trees and shrubs. Discover amazing displays of different plants and habitats, including a Bog Garden, Winter Garden, Heather Garden, Hydrangea Walk, Himalayan Valley and Acer Valley. Garden tours can be booked with Head Gardener or a specialist talk can be arranged with a speaker.

Tel: +44 (0)1794 369318

Email: [hilliergardens.groups@hants.gov.uk](mailto:hilliergardens.groups@hants.gov.uk)  
[www.hilliergardens.co.uk](http://www.hilliergardens.co.uk)



Sir Harold Hillier Gardens. ©March Creative

## Exbury Gardens & Steam Railway

Over 20 miles of riverside walks and woodland pathways showcasing the world-famous Rothschild collection of rhododendrons, azaleas and camellias. Here you can smell the heady aromas and see the stunning colours of these glorious flowers as they burst into bloom in spring.

At other times of the year you can explore this garden's many attractions, including its steam railway, tree-lined walks, adventure playground and spectacular views of the Beaulieu River. Group size minimum 15. Printed information is available in French and German.

Tel: +44 (0)23 8089 1203

Email: [info@exbury.co.uk](mailto:info@exbury.co.uk)  
[www.exbury.co.uk](http://www.exbury.co.uk)



Exbury Gardens Pond in May.  
 ©Murray Sanders Daily Mail



## Mottisfont, nr Romsey

A romantic house and art gallery set in beautiful riverside gardens which include a walled rose garden. The House features an 800 year old vaulted cellarium, the extraordinary drawing room created by Rex Whistler and a superb collection of 20th century art.

This superb National Trust garden has over 500 varieties of roses and some varieties are so rare that it's possible, the only examples left in the world are found here.

Discover ancient oak woodland, working hazel and chestnut coppices, wetland meadows and mixed plantations. Arrange a guided tour of the House and gardens or a specialist walk perhaps looking at Mottisfont's impressive collection of trees.

Tel: +44 (0)1794 340757

Email: [groupbookings.mottisfont@nationaltrust.org.uk](mailto:groupbookings.mottisfont@nationaltrust.org.uk)

[www.nationaltrust.org.uk/mottisfont](http://www.nationaltrust.org.uk/mottisfont)



Mottisfont, nr Romsey ©National Trust Images – Clive Nichols



## Places to Eat

### Brasserie Blanc, Winchester

A traditional French restaurant in the heart of the city centre. Maximum capacity for dining 45.

Tel: +44 (0)1962 810870

Email: [winchester@brasserieblanc.com](mailto:winchester@brasserieblanc.com)  
[www.brasserieblanc.com/restaurants/winchester/](http://www.brasserieblanc.com/restaurants/winchester/)



### Mercure Southampton Centre Dolphin Hotel

The Dolphin Hotel is an inn dating back to the 15th Century and the oldest hotel in Southampton. It is most famously known for where author Jane Austen, celebrated her 18th birthday. Maximum capacity for dining in the restaurant is 60.

Tel: +44 (0)23 8038 6460

Email: [H7876-SL@accor.com](mailto:H7876-SL@accor.com)  
[www.dolphin-southampton.com](http://www.dolphin-southampton.com)



### The Wykeham Arms, Winchester

Between the Cathedral and the 14th century College, this historic award-winning inn dates from 1755 and offers great food, Champagne afternoon tea and ales. Maximum capacity for dining 60.

Tel: +44 (0)1962 853834

Email: [wykehamarms@fullers.co.uk](mailto:wykehamarms@fullers.co.uk)  
[www.wykehamarmswinchester.co.uk](http://www.wykehamarmswinchester.co.uk)



### The Old Vine, Winchester

Blending style, character and comfort, this charming 18th century inn offers locally produced food. Inside, the beams and posts in the bar and restaurant are timbers from 17th century ships and it has listed 14th century vaulted cellars.

Tel: +44 (0)1962 854616

Email: [reservations@oldvinewinchester.com](mailto:reservations@oldvinewinchester.com)  
[www.oldvinewinchester.com](http://www.oldvinewinchester.com)



The Old Vine, Winchester

## The Pig in the Wall, Southampton

A stylish boutique hotel and deli bar set within Southampton's historic medieval walls. Great for a coffee stop while exploring the city's heritage.

Tel: +44 (0)23 8063 6900  
Email: [info@thepiginthewall.com](mailto:info@thepiginthewall.com)  
[www.thepighotel.com/in-the-wall/](http://www.thepighotel.com/in-the-wall/)



## Cassandra's Cup Tea Room, Chawton

This pretty English tea room is the perfect spot to enjoy a traditional afternoon tea. Maximum capacity for dining 40 plus alfresco seating.

Tel: +44 (0)1420 83144  
Email: [tearooms@cassandrascup.co.uk](mailto:tearooms@cassandrascup.co.uk)  
[www.cassandrascup.co.uk](http://www.cassandrascup.co.uk)



The Pig in the Wall, Southampton

## The Old Kitchen Tea Room at Chawton House

This homely kitchen radiates a welcoming countryside charm. The Old Kitchen was built in 1592 and included a scullery, wine cellar, game larder, Wellhouse and Pump Room. It is located on the ground floor of the Servants Passage, there is extra seating in the pretty courtyard with views of the Library Terrace. Afternoon tea is a speciality!

Tel: +44 (0)1420 541010  
Email: [groups@chawtonhouse.org](mailto:groups@chawtonhouse.org)  
[www.chawtonhouse.org](http://www.chawtonhouse.org)



The Old Kitchen Tea Room at Chawton House



## Guided Tours

### Winchester/Hampshire

Winchester Tourist Guides  
City walking tours starting point  
Winchester Tourist Information Centre.  
Also special interest tours available  
including Jane Austen themed itinerary.

Tel: +44 (0)1962 840500  
Email: [tourism@winchester.gov.uk](mailto:tourism@winchester.gov.uk)  
[www.winchestertouristguides.com](http://www.winchestertouristguides.com)

---

### See Southampton

Entertaining and innovative tours  
including The Mayflower Story, Titanic  
for visiting groups by Southampton's top  
award-winning guides.

Tel: +44 (0)7770 842728  
Email: [info@seesouthampton.co.uk](mailto:info@seesouthampton.co.uk)  
[www.seesouthampton.co.uk](http://www.seesouthampton.co.uk)

---

### Southampton Tourist Guides Association

Bringing the stories of old Southampton  
alive since 1976, award-winning and  
qualified guides offer tours around  
historic buildings, walking tours, coach  
and courier services and provide advice  
on excursions.

Tel: +44 (0)23 8022 2482  
Tel: +44 (0)7748 335576  
Email: [southamptontouristguides76@gmail.com](mailto:southamptontouristguides76@gmail.com)  
[www.southamptontouristguides.com](http://www.southamptontouristguides.com)

## Speakers

Speakers are available to provide on-  
ship and on-shore presentations, after  
dinner speeches.

### Barry Clarke

Email: [barry.clarke@hants.gov.uk](mailto:barry.clarke@hants.gov.uk)  
Gardens

### Cheryl Butler

Email: [hello@cherylbutler.co.uk](mailto:hello@cherylbutler.co.uk)  
Heritage and Southampton

### Godfrey Collyer

Email: [godfrey@seesouthampton.co.uk](mailto:godfrey@seesouthampton.co.uk)  
Heritage Southampton



Sir Harold Hillier Gardens. ©March Creative



## Newbury

- Highclere Castle

- Whitchurch Silk Mill
- Bombay Sapphire Distillery

## Whitchurch

- Parsonage Farm
- Army Flying Museum

## Andover

- Winchester Cathedral
- Winchester Cathedral Refectory cafe
- The Old Vine
- The Wykeham Arms
- The Blend Academy
- St James Tavern
- The King Alfred
- The Chesil Rectory
- Brasserie Blanc
- The Running Horse Inn
- Hattingley Valley Vineyard
- Juniper Leisure Tank Driving Experience
- The Season Cookery School at Lainstone House

## Winchester

- God's House Tower
- Tudor House & Garden
- SeaCity Museum
- Southampton City Art Gallery
- SS Shieldhall
- The Pig in the Wall
- Mercure Southampton Centre Dolphin Hotel
- Grand Cafe
- White Star Tavern
- London Road Brewhouse
- Dancing Man Brewery
- Westquay shopping

## Romsey

- Sir Harold Hillier Gardens
- Mottisfont

## New Forest

- Cyclexperience
- Exbury Gardens & Steam Railway
- Ringwood Brewery
- Hartnett & Holder & Co Backstage at Lime Wood
- The Kitchen Cookery School at Chewton Glen Hotel
- Buckler's Hard

## Southampton

- Palace House & Gardens and National Motor Museum
- New Forest Activities

## Beaulieu

## Wickham

10 mi



# Map

## Basingstoke

- The Vyne

## Chawton

- Jane Austen's House Museum
- Chawton House
- Cassandra's Cup Tea Rooms
- The Old Kitchen Tea Room

## Alresford

- Winchester Distillery
- The Woolpack Inn
- The Watercress Line

## Selborne

- Gilbert White & The Oates Collections

## Petersfield

- Hambledon Vineyard

- Chesapeake Mill
- Table 22

20 miles

- The Golden Lion
- The D-Day Wall Map
- Royal Armouries Fort Nelson

## Southwick

30 miles

- Portsmouth Historic Dockyard
- The Mary Rose
- The D-Day Story
- Royal Navy Submarine Museum
- Explosion Museum of Naval Firepower
- Charles Dickens Birthplace Museum
- The Spinnaker Tower
- Hovercraft Experience
- Gunwharf Quays
- Wetwheels Solent
- Mozzarella Joe's

## Portsmouth

Hampshire is renowned as the birthplace of some of England's most famous authors – Jane Austen, Gilbert White and Charles Dickens. Their works are all linked affectionately to the wonderful county of Hampshire.



# Literary heritage

## Jane Austen's House Museum, Chawton

Jane Austen's House Museum in Hampshire is the only house where Jane Austen lived and wrote that is open to the public. It is the most treasured Austen site in the world.

Explore the house and learn about Jane's life through displays of her precious belongings including her jewellery, letters and the table where she wrote her much loved novels.

It was in this country cottage that Jane's genius flourished and where she wrote, revised and had published all her novels, including the timeless *Pride and Prejudice*.

Tel: +44 (0)1420 83262  
 Email: [enquiries@jahmusm.org.uk](mailto:enquiries@jahmusm.org.uk)  
[www.jane-austens-house-museum.org.uk](http://www.jane-austens-house-museum.org.uk)



Jane Austen's House Museum, Chawton



## Chawton House

A quintessential Elizabethan manor house that once belonged to Jane Austen's brother, Edward. Jane Austen referred to this as the 'Great House' in her letters. Jane lived in a cottage on his estate which is now Jane Austen's House Museum where Jane enjoyed the most prolific period of her writing life. Maps of the house are available in most European languages.

A tour of the house, a behind the scenes tour or a garden tour with the Head

Gardener can be booked. Group size minimum 10 maximum 20.

The Old Kitchen was built in 1592 and included a scullery, wine cellar, game larder, Wellhouse and Pump Room. Today the Old Kitchen Tea Room is open all day and serves afternoon tea.

Tel: +44 (0)1420 541010  
 Email: [groups@chawtonhouse.org](mailto:groups@chawtonhouse.org)  
[www.chawtonhouse.org](http://www.chawtonhouse.org)



## Gilbert White and The Oates Collections, Selborne

Selborne and its surrounding landscape nestled in the South Downs National Park, inspired Gilbert White's life-long investigation of the natural world culminating in his world-famous book *The Natural History and Antiquities of Selborne*.

This fascinating property tells Gilbert White's story within the walls of his family home and garden. The late extensions to the house host the Oates Collections which celebrate the life of Victorian explorer Frank Oates and his nephew, Captain Lawrence Oates, who died heroically on Captain Scott's ill-fated Antarctic Expedition of 1911/12.

A special tour can include the chance to sample 'Gilbert White Gin' made using botanicals from the 18th century garden.

Tailor-made guided tours can be organised with specialists. Group size minimum 10 maximum 15.

Tel: +44 (0)1420 511275

Email: [info@gilbertwhiteshouse.org.uk](mailto:info@gilbertwhiteshouse.org.uk)

[www.gilbertwhiteshouse.org.uk](http://www.gilbertwhiteshouse.org.uk)



## Winchester Cathedral

One of the finest and largest medieval Cathedrals in Europe, Winchester Cathedral has a history dating back 1000 years. Its magnificent architecture, priceless treasures and great works of art make for a very interesting visit. Winchester was England's ancient capital and is a city steeped in history. Find the resting place of kings, queens and bishops as well as the gravestone of much-loved author Jane Austen.

The Winchester Bible, a 12th century national treasure should not be missed. There are a wide range of special interest guided tours available including a 30 minute Highlights Tour.

Enjoy an exhilarating and unique Tower Tour with an experienced guide with magnificent views across Winchester and the county. Discover the ringing chamber, the great Cathedral bells and walk the full length of the nave roof with its huge wood beams. Afternoon tea can be taken in Medieval Undercroft. Guided audio tours in English, French and German. Printed information available in English, German, French, Italian, Spanish, Portuguese, Dutch, Polish, Hungarian, Russian, Japanese and Chinese.

Tel: +44 (0)1962 857225

Email: [visits@winchester-cathedral.org.uk](mailto:visits@winchester-cathedral.org.uk)

[www.winchester-cathedral.org.uk](http://www.winchester-cathedral.org.uk)





## Charles Dickens Birthplace Museum, Portsmouth

Learn about the author, one of England's most famous and best-loved writers. When Charles Dickens was born in this modest house, on 7th February 1812, Britain's Navy was still at war with Napoleonic France.

Tel: +44 (0)23 9283 4737

Email: [mvs@portsmouthcc.gov.uk](mailto:mvs@portsmouthcc.gov.uk)

[www.charlesdickensbirthplace.co.uk](http://www.charlesdickensbirthplace.co.uk)



Charles Dickens Birthplace Museum, Portsmouth

## Places to eat

### Southampton

#### Mercure Southampton Centre Dolphin Hotel

The Dolphin Hotel is an old coaching inn dating back to the 15th Century and the oldest hotel in Southampton. It is most famously known for where author Jane Austen, celebrated her 18th Birthday in 1793. It is believed that William Makepeace Thackeray wrote part of his novel 'Pendennis' in one of the hotel's distinctive bay windows and it is also believed that William Shakespeare and his company performed in what is now the 'Dolphin Lane'. Afternoon teas can be booked for up to 60 in the restaurant.

Tel: +44 (0)23 8038 6460  
Email: H7876-SL@accor.com  
www.dolphin-southampton.com



---

### Winchester Cathedral Refectory Café

Located in the Cathedral Grounds, this light and airy café has a large terrace with views of the Cathedral and can be booked for light lunches or afternoon tea.

Tel: +44 (0)1962 857258  
Tel: +44 (0)7807 628215  
Email: hospitalitywinchester@baxterstorey.com  
www.winchester-cathedral.org.uk/venue-hire/our-venues/the-refectory/



### Winchester

#### The Old Vine, Winchester

Blending style, character and comfort, this charming 18th century inn offers locally produced food. Inside, the beams and posts in the bar and restaurant are timbers from 17th century ships and it has listed 14th century vaulted cellars.

Tel: +44 (0)1962 854616  
Email: reservations@oldvinewinchester.com  
www.oldvinewinchester.com



Winchester Cathedral Refectory Café

## Cassandra's Cup Tea Room, Chawton

This pretty English tea room is the perfect spot to enjoy a traditional afternoon tea. Maximum capacity for dining 40 plus alfresco seating.

Tel: +44 (0)1420 83144

Email: [tearooms@cassandrascup.co.uk](mailto:tearooms@cassandrascup.co.uk)

[www.cassandrascup.co.uk](http://www.cassandrascup.co.uk)



## The Wykeham Arms, Winchester

Between the Cathedral and the 14th century College, this historic award-winning inn dates from 1755 and offers great food and ales. Maximum capacity for dining 60.

Tel: +44 (0)1962 853834

Email: [wykehamarms@fullers.co.uk](mailto:wykehamarms@fullers.co.uk)

[www.wykehamarmswinchester.co.uk](http://www.wykehamarmswinchester.co.uk)



The Wykeham Arms, Winchester

## Guided tours

### Hampshire Literary Tours with Hidden Britain

A Hampshire based tour company which specialises in literary tours.

The Jane Austen Dancing Years Tour includes a visit to Jane Austen's birthplace, the "cradle of her genius", the church where her father was rector and we trace the people and places she mentions in her letters in beautiful Hampshire villages and churches.

Tel: +44 (0)1256 814222  
Email: [info@hiddenbritaintours.co.uk](mailto:info@hiddenbritaintours.co.uk)  
[www.hiddenbritaintours.co.uk](http://www.hiddenbritaintours.co.uk)

---

### Sarah Siddons Fan Club Theatre Company theatrical tours

The Sarah Siddons Fan Club Theatre Company provides theatrical tours of old Southampton, visiting historical sites in the company of historical characters, who bring to life the people and stories from Southampton's past.

The Company performs plays for private groups, themes include Jane Austen and Southampton Spa.

Tel: +44 (0)7871 488160  
Email: [info@sarahsiddonsfanclub.org](mailto:info@sarahsiddonsfanclub.org)  
[www.sarahsiddonsfanclub.org](http://www.sarahsiddonsfanclub.org)

### See Southampton

Entertaining and innovative tours for individuals and visiting groups by Southampton's top award-winning guides.

Tel: +44 (0)7770 842728  
Email: [info@seesouthampton.co.uk](mailto:info@seesouthampton.co.uk)  
[www.seesouthampton.co.uk](http://www.seesouthampton.co.uk)

### Southampton Tourist Guides Association

Bringing the stories of old Southampton alive since 1976, award-winning and qualified guides offer tours around historic buildings, walking tours, coach and courier services and provide advice on excursions.

Tel: +44 (0)23 8022 2482  
Tel: +44 (0)7748 335576  
Email: [southamptontouristguides76@gmail.com](mailto:southamptontouristguides76@gmail.com)  
[www.southamptontouristguides.com](http://www.southamptontouristguides.com)

---

### Winchester/Hampshire Winchester Tourist Guides

City walking tours starting point Winchester Tourist Information Centre. Also special interest tours available including Jane Austen themed itinerary.

Tel: +44 (0)1962 840500  
Email: [tourism@winchester.gov.uk](mailto:tourism@winchester.gov.uk)  
[www.winchestertouristguides.com](http://www.winchestertouristguides.com)



## Speakers

Speakers are available to provide on-ship and on-shore presentations, after dinner speeches.

**Louise West**

[Louisewest1@btopenworld.com](mailto:Louisewest1@btopenworld.com)

Jane Austen

**Cheryl Butler**

[hello@cherylbutler.co.uk](mailto:hello@cherylbutler.co.uk)

Jane Austen & Literary Hampshire



Southampton



For those who love wining and dining, Hampshire has some of the most exciting venues to explore, taste and enjoy the many flavours of England.

Hambledon Vineyard, nr Petersfield



# Hampshire food and drink experiences

## Vineyards

### Hambledon Vineyard, nr Petersfield

Hambledon Vineyard is England's oldest commercial vineyard producing high quality English sparkling wine. Take a guided tour through the unique, fully gravity-fed, state-of-the-art winery at this beautiful vineyard, nestled on the edge of the South Downs. The friendly and experienced staff will explain the processes involved in making English sparkling wine, as well as what makes Hambledon Vineyard unique. Tours last 2 hours and include a tasting of two Classic Cuvée sparkling wines. Tours can also include local cheese tastings, afternoon tea or picnic hamper lunch.

Tel: +44 (0)2392 632358

Email: [events@hambledonvineyard.co.uk](mailto:events@hambledonvineyard.co.uk)  
[www.hambledonvineyard.co.uk](http://www.hambledonvineyard.co.uk)



Hambledon Vineyard



Hattingley Valley Vineyard

### Hattingley Valley Vineyard, nr Winchester

A family owned vineyard specialising in premium English sparkling wines. Founded by Simon Robinson in 2008, the vineyard and winemaking teams are led by award-winning winemaker Emma Rice. Take a tour of Hattingley Valley with a wine expert for an in-depth look at this state-of-the-art winery, one of the largest and best equipped in the UK, to learn about the production processes involved in creating traditional method sparkling wine, followed by a tasting from the current range.

Tel: +44 (0)1256 389188

Email: [tours@hattingleyvalley.co.uk](mailto:tours@hattingleyvalley.co.uk)  
[www.hattingleyvalley.com](http://www.hattingleyvalley.com)



## Cookery classes

### Season Cookery School at Lainston House Hotel, Winchester

Lainston House is an elegant and exclusive country house on the outskirts of Winchester. The Season Cookery School is located in a converted 17th century wellhouse within the grounds of Lainston House. Bespoke classes can be organised on a 'Bake Off' theme called Let's Get Baking. Course duration is 2 hours for 12 people with minimum 10 guaranteed.

Tel: +44 (0)1962 797853  
Emily.Lippiatt@exclusive.co.uk  
www.exclusive.co.uk



### The Kitchen Cookery School at Chewton Glen Hotel

Learn new culinary skills at The Kitchen cookery school at the exclusive Chewton Glen Hotel. A half day cookery class starts with coffee and pastries and includes lunch in the cookery school kitchen. Book a bespoke class for minimum 10 and maximum 12 people.

Tel: +44 (0)1425 282212  
Email: [cook@chewtonglen.com](mailto:cook@chewtonglen.com)  
[www.chewtonglen.com/the-kitchen/](http://www.chewtonglen.com/the-kitchen/)





## Hartnett & Holder & Co Backstage – The Cookery School at Lime Wood

A boutique country hotel located in the New Forest where visitors can learn to cook like a professional chef. A bespoke class of 10 people guaranteed provides a hands-on experience of making the perfect pizza or macarons. The class lasts for two hours either 11am – 1pm or 2pm – 4pm.

Tel: +44 (0)23 8028 7177  
Email: [backstage@hhandco.co.uk](mailto:backstage@hhandco.co.uk)  
[www.limewoodhotel.co.uk](http://www.limewoodhotel.co.uk)



Hartnett & Holder & Co Backstage



Parsonage Farm Charcuterie Workshops

## Parsonage Farm Charcuterie Workshops, nr Andover

A small working farm in the Hampshire countryside offers charcuterie workshops with experienced tutors. A 3 hour bespoke workshop for 8-10 people includes the curing process with a demonstration and a practical session making salami and preparing and curing meat for air drying.

Tel: +44 (0) 1264 736208  
Email: [sarah@parsonage-farm.co.uk](mailto:sarah@parsonage-farm.co.uk)  
[www.parsonage-farm.co.uk/learn](http://www.parsonage-farm.co.uk/learn)



### Please note:

**Cookery Classes** – You will find that the cookery schools require a minimum guaranteed number, however, it may also be possible to add clients to scheduled classes.

## Distillery and Micro-brewery Tours

### Bombay Sapphire Distillery

Uncover the secrets of this famous gin and enjoy tours of the distillery, which is housed within a 300 year old mill that was used to supply bank note paper to the Bank of England. Take a tour and learn about the history of Laverstoke Mill in the Heritage Room. Discover the botanicals used in the Mediterranean Glasshouses & Botanical Dry Room. Go behind the scenes in the Dakin Still House. Enjoy a complimentary drink in the Mill Bar. Distillery tour group size minimum 11 maximum 50.

A bespoke ultimate experience includes a VIP tour of India House, distillery tour plus cocktail masterclass and light lunch which lasts around 5hours. Another option is a botanical discovery with a horticulturalist along with a distillery tour.

Information available in several foreign languages.

Tel: +44 (0)1256 890090

Email: [groups@bombaysapphire.com](mailto:groups@bombaysapphire.com)

[www.distillery.bombaysapphire.com](http://www.distillery.bombaysapphire.com)



Bombay Sapphire Distillery

## Blend Academy, Winchester

The Blend Academy is Winchester's exclusive and extensive gin blending experience. Sample and experiment with over 100 native and exotic botanical distillates and learn about the art of gin making. Visitors craft their own unique gin guided by Winchester Distillery Master Blenders and take away their hand-bottled creation. Group size minimum 10 maximum 30.

Tel: +44 (0)1962 920290  
Email: [info@blendacademy.co.uk](mailto:info@blendacademy.co.uk)  
[www.blendacademy.co.uk](http://www.blendacademy.co.uk)



## London Road Brewhouse, Southampton

Brewery tours of the microbrewery can be booked where you can watch an eclectic range of cask and keg beers being brewed. Tour lasts 20 minutes followed by a beer tasting.

Tel: +44 (0)23 8098 9401  
Email: [info@londonroadbrewhouse.com](mailto:info@londonroadbrewhouse.com)  
[www.londonroadbrewhouse.com/brewery](http://www.londonroadbrewhouse.com/brewery)



Ringwood Brewery, Ringwood

## Winchester Distillery, Old Alresford

Winchester Distillery is the place for visitors to discover the whole gin making experience led by one of our ambassadors. During the second half of the tour is a visit to the Tasting Room where there's the opportunity to sample premium Hampshire spirits. Group size minimum 10 maximum 30.

Tel: +44 (0)1962 920290  
Email: [events@winchesterdistillery.co.uk](mailto:events@winchesterdistillery.co.uk)  
[www.winchesterdistillery.co.uk](http://www.winchesterdistillery.co.uk)



## Ringwood Brewery, Ringwood

Beers have been brewed here for centuries when it was a magnet for drovers and merchants.

Ringwood Brewery was founded in 1978 by Peter Austin, known as the father of British micro-brewing.

A bespoke brewery tour includes complimentary drink in the Pin Room, a guided tour of the brewery where visitors can see malted barleys, have a sniff of the hops and watch the fermenting brew bubbling away in the Tun Room. Group size minimum 10 maximum 25.

Tel: +44 (0)1425 470303  
Email: [store@ringwoodbrewery.co.uk](mailto:store@ringwoodbrewery.co.uk)  
[www.ringwoodbrewery.co.uk/](http://www.ringwoodbrewery.co.uk/)



## Places to Eat

### Table 22, Wickham

Table 22 is a local family run business that believes in exquisite food and service. With a focus on upscale contemporary cuisine, the menus feature influences from all over the world. The restaurant is set within a luxury Grade II listed Georgian hotel in the pretty village of Wickham with history dating back to Roman Times. Maximum capacity for dining 48 plus alfresco dining.

Tel: +44 (0)1329 835870

Email: [reservations@table22.co.uk](mailto:reservations@table22.co.uk)

[www.table22.co.uk](http://www.table22.co.uk)



Table 22, Wickham



The Woolpack Inn

### The Woolpack Inn, nr Alresford

The Woolpack Inn is a superb country pub with rooms situated in Totford, nestled in the picturesque Candover Valley. Great food and real ales also alfresco dining with a full outdoor kitchen and wood-fired pizza oven. Maximum number for dining 50.

Tel: +44 (0)1962 734184

Email: [info@thewoolpack.co.uk](mailto:info@thewoolpack.co.uk)

[www.thewoolpackinn.co.uk](http://www.thewoolpackinn.co.uk)



### The Wykeham Arms, Winchester

Between the Cathedral and the 14th century College, this historic award-winning inn dates from 1755 and offers great food and ales. Maximum capacity for dining 60.

Tel: +44 (0)1962 853834

Email: [wykehamarms@fullers.co.uk](mailto:wykehamarms@fullers.co.uk)

[www.wykehamarmswinchester.co.uk](http://www.wykehamarmswinchester.co.uk)



The Wykeham Arms, Winchester



## The Chesil Rectory, Winchester

The restaurant is located in a 600 year old Grade II listed medieval building with lots of character and independently owned. The restaurant holds 2 AA rosettes for its dining experience which is enhanced by this fascinating building. Maximum capacity for dining 48 plus alfresco dining.

Tel: +44 (0)1962 851555

Email: [manager@chesilrectory.co.uk](mailto:manager@chesilrectory.co.uk)

[www.chesilrectory.co.uk](http://www.chesilrectory.co.uk)



The Chesil Rectory, Winchester



## Guided Tours

### Grape and Grain Tours, Hampshire

This specialist tour company offers hosted food and drink tasting day tours visiting boutique wine, beer, gin and food producers in Hampshire.

The inclusive tours take guests behind the scenes to see how these products are made and meet the people who make them. It's an educational and fun day in the beautiful English countryside. All tours can include a two-course gastropub lunch and luxury mini-coach transport. Group size minimum 10 maximum 24.

Tel: +44 (0)7429 498423

Email: [joel@grapeandgraintours.co.uk](mailto:joel@grapeandgraintours.co.uk)

[www.grapeandgraintours.co.uk](http://www.grapeandgraintours.co.uk)

### Yomp and Chomp, Southampton

Experience the most delicious venues in the old city on this walking tour. Hear tales of King Canute, Pirate raids, the sailing of the Mayflower to the New World, Jane Austen, the loss of R.M.S. Titanic, Aviation in World War I and Operation Overlord and World War II. Tour options include Tea and Titanic, a 2-hour tour with cream tea served in the Grand Café. A four-hour tour takes in six venues with a variety of tastings including fish and chips, gin, ale, buttered crumpets, cheese tasting, cider and New Forest crackling. Group size minimum 6 maximum 12.

Tel: +44 (0)7527 561831

Email: [bookings@yompandchomp.com](mailto:bookings@yompandchomp.com)

[www.yompandchomp.com](http://www.yompandchomp.com)



Grape and Grain Tours

Hampshire is the perfect place to take in the stunning scenery, browse the local culture or do some shopping. For the more energetic and adventurous, there are activities from forest cycling to tank driving.



# Activities

## Southampton City Art Gallery

High quality exhibitions collaborating with leading artists, arts institutions and displaying a one of the finest outside London with over 5300 works. Tours can be arranged with an art specialist.

Tel: +44 (0)23 8083 4536

Email: [museums@southampton.gov.uk](mailto:museums@southampton.gov.uk)

[www.southamptoncityartgallery.com](http://www.southamptoncityartgallery.com)



Southampton City Art Gallery

## Westquay Shopping, Southampton

The premier shopping destination on the south coast offers over 100 stylish shops and a great selection of restaurants.

Tel: +44 (0)23 8023 6789

Email: [info@west-quay.co.uk](mailto:info@west-quay.co.uk)

[www.west-quay.co.uk](http://www.west-quay.co.uk)



Westquay Shopping, Southampton

## Cycl Experience Bike Hire, Brockenhurst

Established 25 years ago and based in the New Forest, this family-run cycling business offers a fleet of 400 bikes for hire including road, mountain and electric bikes. Also 6 tandems and a disabled trike. Trails are mainly traffic-free and mostly flat. There are 16 circular rides to choose from. All rentals come with safety equipment and free maps or a free app download. Pre booked guided cycle rides also available, maximum 12 riders per guide. Short session 1-3 hours, standard session 3hours+.

Tel: +44 (0)1590 624808  
Email: [hire@cycllex.co.uk](mailto:hire@cycllex.co.uk)  
[www.cycllex.co.uk](http://www.cycllex.co.uk)



## New Forest Activities, Beaulieu

This outdoor activities company provides fun and enlightening experiences in the New Forest for couples, families and groups of all ages.

Many of the activities are located within the Beaulieu Estate but other locations are available. Activities include canoeing and kayaking, woodland archery and Battlefield Live – an exciting outdoor laser tag experience. There's also an opportunity to Paddle to the Pub with a 90 minute guided tour of the river ending at the Master Builder's riverside pub at Buckler's Hard.

Tel: +44 (0)1590 612377  
Email: [info@newforestactivities.co.uk](mailto:info@newforestactivities.co.uk)  
[www.newforestactivities.co.uk](http://www.newforestactivities.co.uk)



Cycl Experience Bike Hire, Brockenhurst



## Juniper Leisure Tank Driving Experience, nr Winchester

Located on a private estate a few miles from Winchester, Juniper Leisure's highly qualified instructors have been bringing people together in a fun atmosphere and offering an exciting driving experience for over 20 years. For a truly unique adventure, a bespoke driving experience in a Chieftain Battle Tank can also be booked.

Group size minimum 10 maximum 20.

Tel: +44 (0)1794 367367

Email: [info@juniperleisure.com](mailto:info@juniperleisure.com)

[www.tank-driving.com](http://www.tank-driving.com)



## The Watercress Line

'The Watercress Line', is a heritage steam railway running through beautiful Hampshire scenery from the market town of Alresford, home to Hampshire's watercress industry, to Alton. Jane Austen's house in Chawton is just 3 miles from Alton station and visitors can take pictures at the Harry Potter footbridge used in the world famous films.

There are plenty of special packages to choose from including Dining Trains, Real Ale Train and Behind the scenes tours. Private hire for up to 300 people is also available.

Tel: +44 (0)1962 733810

Email: [reservations@watercressline.co.uk](mailto:reservations@watercressline.co.uk)

[www.watercressline.co.uk](http://www.watercressline.co.uk)



The Watercress Line

## Hovercraft experience, Lee on Solent

Visit the Hovercraft Museum and take a trip on a hovercraft. Founded in 1987, the Hovercraft Museum Trust has the world's greatest collection of Hovercraft archive, film, and historic craft, dating back to John Thonycroft's 1870 air lubricated boat models.

Hovertravel is the world's longest running commercial hovercraft service and is the only scheduled passenger hovercraft service in the Europe. Hovertravel offers the fastest way to cross the Solent between Southsea, Portsmouth and Ryde, Isle of Wight.

Hovertravel operate two hovercraft with a frequent service and the journey time is just under 10 minutes. Maximum capacity on Hovertravel is 78.

Tel: +44 (0)1983 717700

Email: [groups@hovertravel.com](mailto:groups@hovertravel.com)

[www.hovertravel.co.uk](http://www.hovertravel.co.uk)

[www.hovercraft-museum.org](http://www.hovercraft-museum.org)



Hovercraft experience, Lee on Solent

## Wetwheels Solent

Wetwheels is a specialist attraction for disabled people to give a full powerboating experience. Everyone on board will have the chance to steer the especially designed boats with the help of specialist staff. Trips can be tailor-made to suit timescales from a trip round the harbour or a trip to the Isle of Wight and a lunch stop.

Trips depart Gunwharf Quays Marina or River Hamble, Southampton.

Tel: +44 (0)23 9281 9366

Email: [office@wetwheelssolent.co.uk](mailto:office@wetwheelssolent.co.uk)

[www.wetwheelsmaritimeadventures.co.uk](http://www.wetwheelsmaritimeadventures.co.uk)



## Gunwharf Quays

With Portsmouth's key attractions close-by, Gunwharf Quays is a perfect spot to dine and shop with high-end stores and 30 restaurants, bars and coffee shops.

Tel: +44 (0)23 9283 6700  
 Email: [gwq-info@landsec.com](mailto:gwq-info@landsec.com)  
[www.gunwharf-quays.com](http://www.gunwharf-quays.com)



Gunwharf Quays

## The Spinnaker Tower

At 170 metres tall and dominating the Portsmouth skyline, the Spinnaker Tower (Spinnaker is a type of sail which balloons out), is a must visit. Marvel at the panoramic view of Portsmouth historic harbour, the Solent and Isle of Wight 350 degree views stretching 23 miles. Walk across the amazing glass Sky Walk, enjoy a sparkling high tea or a cream tea in the café in the clouds.

For the more adventurous try The Drop adrenalin experience or abseil down the Tower.

Tel: +44 (0)23 9285 7520 option 3  
 Email: [groupbookings@spinnakertower.co.uk](mailto:groupbookings@spinnakertower.co.uk)  
[www.spinnakertower.co.uk](http://www.spinnakertower.co.uk)



The Spinnaker Tower

## Places to Eat

### Winchester Cathedral Refectory Café

Located in the Cathedral Grounds, this light and airy café has a large terrace with views of the Cathedral and can be booked for light lunches or afternoon tea.

Tel: +44 (0)1962 857258

Tel: +44 (0)7807 628215

Email: [hospitalitywinchester@baxterstorey.com](mailto:hospitalitywinchester@baxterstorey.com)

[www.winchester-cathedral.org.uk/venue-hire/our-venues/the-refectory/](http://www.winchester-cathedral.org.uk/venue-hire/our-venues/the-refectory/)



Winchester Cathedral Refectory Café



The Running Horse Inn, nr Winchester

### The Running Horse Inn, nr Winchester

This stylishly renovated inn offers 2 AA rosette dining and is located in a pretty village on the outskirts of Winchester. Maximum capacity for dining is 50.

Tel: +44 (0)1962 880218

Email: [info@runninghorseinn.co.uk](mailto:info@runninghorseinn.co.uk)

[www.runninghorseinn.co.uk](http://www.runninghorseinn.co.uk)



### St James Tavern, Winchester

A traditional pub in the north of the city centre offering a good selection of lunches.

Tel: +44 (0)1962 861288

Email: [stj@littlepubgroup.co.uk](mailto:stj@littlepubgroup.co.uk)

[www.the.littlepubgroup.co.uk/the-st-james-tavern](http://www.the.littlepubgroup.co.uk/the-st-james-tavern)



### Mozzarella Joe's, Portsmouth

Southsea's only café on the seafront and specialises in catering for groups.

Tel: +44 (0)23 9229 5004

Email: [info@mozzarellajoes.co.uk](mailto:info@mozzarellajoes.co.uk)

[www.mozzarellajoes.co.uk](http://www.mozzarellajoes.co.uk)





# Suggested excursions

Ideal for pre or post cruise

## New Forest

- Guided walk of Southampton on maritime theme
- New Forest activities on river
- Bucklers Hard including visit to maritime museum
- Palace House, Gardens and National Motor Museum, Beaulieu

## Maritime tour

- Southampton Guided tour
- SeaCity Museum
- Lunch White Star Tavern Southampton or Golden Lion Southwick
- Portsmouth Historic Dockyard
- Mary Rose/The D-Day Story

## Jane Austen theme

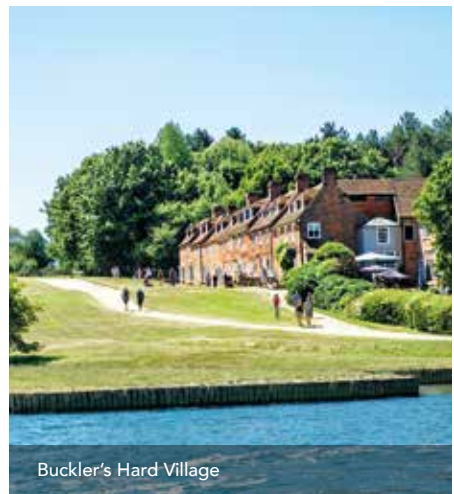
- Jane Austen House Museum
- Refreshment stop at Cassandra's Cup or Old Kitchen Tea Room at Chawton House
- Chawton House
- Lunch in Winchester either The Old Vine, Wykeham Arms, Winchester Cathedral Refectory Cafe or St James Tavern
- Winchester Cathedral Jane Austen themed tour
- Guided tour of Winchester

## Food and Drink experience

- Season Cookery School at Lainston House Hotel 2 hour cookery class
- Visit to Winchester Cathedral
- Winchester for light lunch Old Vine or Wykeham Arms
- Hambledon Vineyard wine tasting and tour

## Wartime heritage over the years

- God's House Tower and guided tour of Southampton
- Lunch in Southampton
- Portsmouth Dockyard
- The D-Day Story



Buckler's Hard Village

## Additional Information

### Port

Southampton Port  
Ocean gate  
Atlantic Way  
Southampton,  
SO14 3QN  
Rebekah Keeler  
Email: [rkeeler@abports.co.uk](mailto:rkeeler@abports.co.uk)

Southampton Port is a short distance from city centre and well served by all modes of transport.

### Coach Companies

**Princess Coaches**  
A leading supplier of 16 air-conditioned luxury coaches in the Southampton area.  
Tel: +44 (0)23 8047 2150  
Email: [admin@princesscoaches.com](mailto:admin@princesscoaches.com)  
[www.princesscoaches.co.uk](http://www.princesscoaches.co.uk)

**Angela Coaches**  
Luxury coach provider from 7-52 seats in the South Coast area.  
Tel: +44 (0)23 8040 3170  
Email: [robert@angelacoaches.com](mailto:robert@angelacoaches.com)  
[www.angelacoaches.co.uk](http://www.angelacoaches.co.uk)

**Pegasus Coaches**  
Based in Southampton this independent coach company has 8 coaches and 2 minibuses in its fleet. It can arrange Blue/Green Badge guides (including German, French, Spanish and Swedish).  
Tel: +44 (0)23 8099 9999  
Email: [info@pegasuscoaches.co.uk](mailto:info@pegasuscoaches.co.uk)  
[www.pegasuscoaches.co.uk](http://www.pegasuscoaches.co.uk)

**Lucketts Travel**  
Largest provider of luxury travel on the South Coast with 130 modern, luxury coaches, buses and people carriers.  
Tel: +44 (0)1329 823755  
Email: [holidays@lucketts.co.uk](mailto:holidays@lucketts.co.uk)  
[www.lucketts.co.uk](http://www.lucketts.co.uk)

### Events

July (alternative years)  
Farnborough Air Show  
[www.farnboroughairshow.com](http://www.farnboroughairshow.com)

July (annually)  
Hampshire Food Festival  
[www.hampshirefare.co.uk](http://www.hampshirefare.co.uk)

July (annually)  
Winchester Hat Fair  
[www.hatfair.co.uk](http://www.hatfair.co.uk)

July (annually)  
New Forest Show  
[www.newforestshow.co.uk](http://www.newforestshow.co.uk)

July and September (annually)  
Goodwood Festival of Speed and Revival  
[www.goodwood.com](http://www.goodwood.com)

August (annually)  
Coves Week  
[www.lendycowesweek.co.uk](http://www.lendycowesweek.co.uk)

September (annually)  
Southampton Boat Show  
[www.southamptonboatshow.com](http://www.southamptonboatshow.com)

### Event Overview

For the latest information on Southampton and Hampshire's spectacular annual programme of world-class events, please see [www.visit-hampshire.co.uk/whats-on](http://www.visit-hampshire.co.uk/whats-on) [www.visitsouthampton.co.uk](http://www.visitsouthampton.co.uk)

In 2020, visitors can look forward to a number of Mayflower related events. For more details of the Mayflower 400 commemorations visit [www.mayflower400uk.org](http://www.mayflower400uk.org)

For specific enquiries and further information contact Andrew Bateman at Visit Hampshire  
[Andrew.Bateman@hants.gov.uk](mailto:Andrew.Bateman@hants.gov.uk)



Emirates Spinnaker Tower

# Key

Below is an explanation of our symbols to help you get the maximum from your excursion planning.



**Coach Parking** – Designated coach parking spaces on site. Some venues offer drop off and pick up points. Check on booking.



**Catering on site** – Range can include refreshments, light snacks or meals, most require pre-booking for groups of all sizes.



**Accessibility** – Wheelchair access can be limited due to age and restrictions on space in an attraction. Some provide access for a wide range of disabilities. Check on booking.



**Within walking distance from the port** – Denotes that the venue is within reasonable walking distance of the port of Southampton.



**Distance from port** – Distance in miles from the port of Southampton.



**Average duration** – This is an indication of how long in hours the average visitor spends at the venue.



**Tailored Guided Tours** – In addition to any standard tour, the venue has indicated they are willing to discuss creating a visit that will meet your clients’ needs and requirements.



**Family friendly** – Used to denote specific interest for children and/or provision of child friendly facilities.

---

## Please note

**Group size** – Some venues have indicated the minimum size they classify as a group. Restricted size venues will often suggest options for groups larger than they can accommodate for an experience.



Leisure Excursions for Cruise and Conference Project Partners



Printed March 2019. All details are correct at time of publication and these are subject to change at any of venues featured.

For further information on the Leisure Excursions for Cruise & Conference project, please contact **Laura Campbell:** [laura@lauracampbell.biz](mailto:laura@lauracampbell.biz)