

A beautiful historic market town

THE STOCKBRIDGE

POCKET GUIDE



PLACES TO VISIT • SHOPPING GUIDE
EATING OUT • COUNTRY PUBS • BEAUTIFUL WALKS



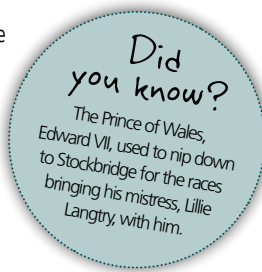
TEST VALLEY
BOROUGH COUNCIL

Lying in the heart of Test Valley, the wide picturesque Stockbridge High Street reflects its early role as part of a drovers road where it was common to see flocks of sheep or herds of cattle being driven through the town en route from Wales. Seek out the Drovers House and you can still spot a sign in Welsh. The town of Stockbridge, with its long and varied history, has inspired many poets over the years and there is a trail of ten poems, set in stone, metal plaques and etched glass, for you to follow as you wander through the town, discovering its treasures.



The River Test flows through this delightful Hampshire town. Its wide street has an abundance of art galleries, outdoor pursuit and gift shops, restaurants and pubs.

Stockbridge means, literally, a bridge over the river. On a causeway of compressed chalk laid down in the remote past for a crossing of the River Test, Stockbridge is almost midway between Andover to the north and Romsey to the south. The river is shallow and divides here into five streams which thread their way through the marshy meadows and under the main road.

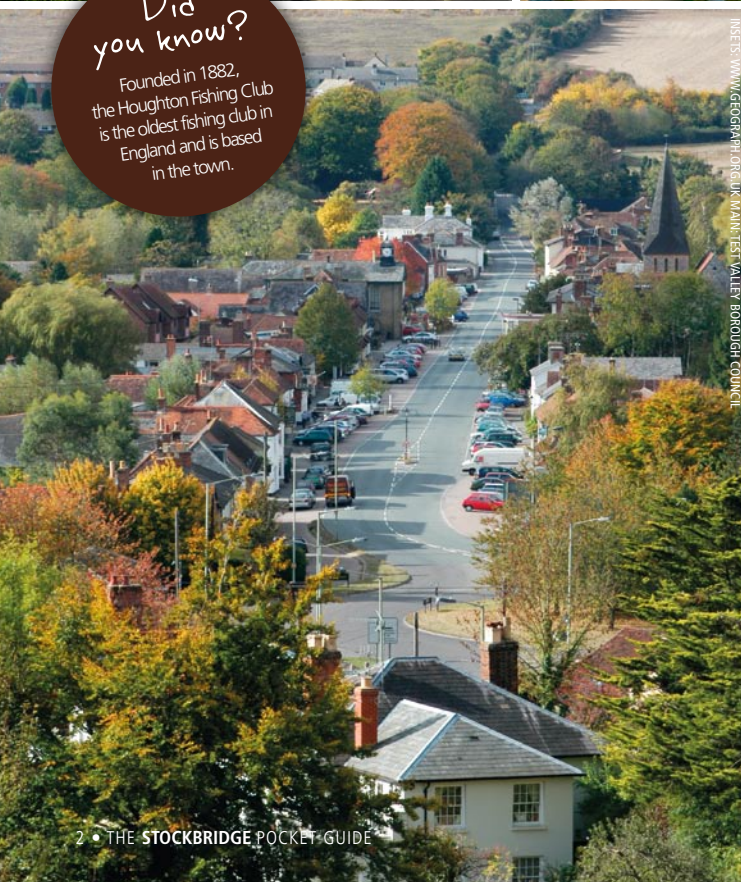


There were settlements on Stockbridge Down from at least the second millennium BC; within a short distance are the impressive earthworks at Danebury, Meon Hill and Woolbury. Two ancient roads meet and cross at Stockbridge, one running east to west between Winchester and Old Sarum, later Salisbury, and the other running north and south along the valley of the Test. The prosperity of Stockbridge has always stemmed largely from the roads which pass through it.

The valley here is wide enough to have provided a river crossing since earliest times and a posting station in Roman times on the road from Winchester to Sarum. The 'town' (actually little more than a single row of buildings on each side of the wide main street) grew in importance when Welsh drovers rested there with their flocks on their way to various sheep fairs and markets in the South East. A thatched cottage known as 'Drovers House' has the message in Welsh painted on the wall: 'Seasoned hay, tasty pastures, good beer, comfortable beds'.

Stockbridge has a 12th century chapel, now known as St Peter's, which was served by the 'head-minster' at King's Somborne, as were other chapels in the 'hundred'. Thus, although Stockbridge became a flourishing small borough, which eventually gained parliamentary representation, it never had a parish church of its own until 1848. Its inhabitants were duly christened, married and buried, but in a chapel served from King's Somborne.

For more information on Stockbridge visit www.testvalley.gov.uk/tourism



IMAGES: WWW.GEOGRAPHY.ORG.UK; MAIN: TEST VALLEY BOROUGH COUNCIL

Stockbridge is not just a collection of lovely shops; with its wide Georgian High Street, it's also a venue for events and activities which celebrates the seasons and brings complementary opportunities to residents and visitors alike. Visit our website www.testvalley.gov.uk/tourism to see what other events are planned in the area throughout the year.

A Taste of Italy

STEVE GREEN



A traditional Italian market visits Stockbridge in April. Eighteen stalls decorated with the 'Tricolore' Italian flag selling food direct from Italian producers. Take your pick from a wide range of delicious cheeses, cured meats, olive oils, balsamic vinegars and pastas in all shapes and sizes. You will find a wide selection of speciality breads. Also Italian biscuits and sweets to tempt those with a sweet tooth.

Trout 'n About Festival – local food, produce and crafts

Held in August, Stockbridge celebrates the town's reputation as a destination for food lovers. There are around twenty stalls along the High Street from 10am until 4pm. There is a wide variety of goods to buy including fresh and smoked trout, Hampshire buffalo meat and venison, ice-cream, bread, cakes, rapeseed oil and jams. Cookery demonstrations will be held throughout the day. Local pubs and restaurants will be offering taster dishes with a voucher scheme to enable visitors to try dishes. A must visit.



WWW.TOWNS.ORG.UK

Christmas Shopping

RACHAELTON-TAYLOR



To get you into the festive spirit and give you a chance to do your Christmas shopping in a relaxed atmosphere, Stockbridge holds a late night event every year, which is held on the second Tuesday of December starting at 5.30pm. There will be carols around the church tree as well as a chance to visit Santa's Grotto. Mulled wine and festive foods will be on offer throughout the evening whilst you wander around Stockbridge's collection of one-off shops offering a wide range of wonderful gifts. Then perhaps to finish the evening, why not visit one of the many excellent eateries in Stockbridge. A perfect ending to a wonderful evening...

Stockbridge lies at the heart of the popular Test Valley and features many circular walks for the casual walker, some of which link into longer distance routes. Wonderful features are close at hand: Stockbridge Marsh, which walkers can reach direct from the High Street and Stockbridge Down, with its panoramic views across the valley, are both owned by the National Trust. Just up the hill towards Salisbury is one of the most famous Iron Age Hill Forts in England – Danebury. The Sprat and Winkle Line, once a railway line linking Southampton and Andover is now part of the Test Way long distance footpath and runs through Stockbridge. For further information visit www.hants.gov.uk/walking

Stockbridge to Mottisfont Walk



Still using the old railway line, the path passes through Stockbridge Common - a quiet world of reedbeds and waterfowl. Here, beside the water, the Clarendon Way (which stretches from Winchester to Salisbury) crosses the valley just before you reach the ancient crossing point of Horsebridge. Continue past one of the few remaining old railway stations (now privately owned). On to Lower Brook, cross the meadows and finish this section on grass tracks at the famous Mottisfont Abbey, a National Trust property whose walled kitchen garden holds the national collection of old-fashioned roses. www.3.hants.gov.uk

Clarendon Way

DAVID WHEATLEY



A 24-mile walk joining the two Wessex cities of Winchester and Salisbury, The Clarendon Way crosses the Test Valley between King's Somborne and Houghton. It starts beside the waters of the Itchen in the heart of Winchester, passing the Horse Monument at Farley Mount (pictured) and ends near the Avon at Salisbury Cathedral. It provides a splendid variety of scenery along the way, ranging from the water meadows of the valleys with their charming villages through woodland – ancient as well as modern – to downlands with far-ranging views. www.3.hants.gov.uk

Testway Walk

This 44-mile long-distance walking route takes you from its dramatic start, high on the chalk downs at Inkpen, to follow much of the course of the River Test to Eling where its tidal waters flow into Southampton Water. This is without doubt Hampshire's longest and finest chalk stream, world famous for its superb trout fishing (not public use). www.3.hants.gov.uk



There are many other visitor attractions within easy-striking distance of Stockbridge and even more picturesque villages around the area to explore. It has two churches and like many of the beautiful villages in the Test Valley, these are celebrated in a leaflet and book called *The Churches of Test Valley*. Also look out for the *Test Valley Visitor Guide* available from Tourist Information Centres.

1 Longstock Park Nursery

Longstock, nr Stockbridge SO20 6EH
Tel: 01264 810 894



Longstock Park Nursery, part of the Leckford Estate owned and managed by John Lewis Partnership, lies within Hampshire's picturesque Test Valley. The nursery is set in and around a brick and flint walled garden, and is home to national collections of Buddleja and Clematis Viticella and the Gilchrist collection of Penstemons. Our aim is to supply a wide range of good quality, often unusual, hardy plants. Open Monday-Saturday 8.30am-4.30pm. Sunday 11am-5pm.

www.longstocknursery.co.uk

2 Longstock Park Water Garden

Longstock, nr Stockbridge SO20 6JF
Tel: 01264 810 904



The seclusion of the garden and its mixed habitats attract a variety of wildlife. As well as water birds including herons, moorhens and kingfishers, there are many species of freshwater fish - pike, roach, bream golden orfe and four types of carp, including Japanese Koi carp. Charity open days 2pm - 5pm on the first and third Sunday April-September.

www.longstockpark.co.uk

3 The Museum of Army Flying

Middle Wallop, Stockbridge SO20 8DY
Tel: 01264 784 421



Unstuffy. Family friendly. Hands on; Historic aircraft and displays celebrating 130 years of heroic flying achievement. 2 flight simulators, rifle ranges, 1940s house, play area, shop, cinema, café. Alongside working airfield. Plenty of free parking.

www.armyflying.com

4 Danebury Iron Age Hill Fort

On A30, West of Stockbridge SO20 6LQ



Danebury Iron Age Hill Fort is 2,500 years old. It is a nationally important Scheduled Ancient Monument and also a Site of Special Scientific Interest... it's also a great place for kite flying! Danebury is 4km north west of Stockbridge. The site is open all day, every day, free entry with ample free parking, and toilets are open from April to October. Telephone to check for occasional closures for essential works or unforeseen emergencies.

www.3.hants.gov.uk

5 Mottisfont

Mottisfont, nr Romsey SO51 0LP
Tel: 01794 340 757



At the heart of this tranquil rural estate is Mottisfont, set in glorious grounds alongside the fast-flowing River Test. There are many layers of history for the visitor to explore, including the Gothic remains of the original 13th century Augustinian priory. In the mid 20th century the final private owner, society hostess and patron of the arts Maud Russell, used the Abbey as a base for her racy and intriguing life.

www.nationaltrust.org.uk

6 Danebury Vineyards

Danebury House, Nether Wallop SP20 6JX
Tel: 01264 781 851



Only 3 miles from Stockbridge following the A30 to Salisbury, Danebury Vineyards are located on the paddocks of what was a famous 19th century racehorse training yard. The vineyards cover 7 acres (2.8ha) of sheltered, south-facing fields on chalk and flint-stone soil. Our first vines were planted in 1988 and today we produce two single-grape still white wines: Madeleine Angevine and Schönburger, together with our 'Cossack' vintage sparkling wine.

Please note we are not open to the public but you can visit our website for details of our open days throughout the year.

www.danebury.com

7 Houghton Lodge Gardens

Houghton, Stockbridge SO20 6LQ
Tel: 01264 810 502



Picturesque gardens surrounding the 18th century Cottage Orné overlooking the River Test and water meadows. Enjoy the peaceful Walled Garden with espalier fruit trees, beautiful herb garden, rose arches and peony walk. Visit the Orchid House, Hydroponicum, the Alpacas and watch out for the steaming Topiary dragon. Self-service refreshments in visitor centre. Open: 1st March-31st October 10am-5pm. Wednesdays and tours of the house are by appointment only. Admission: Adults £5.00. Children U14 FREE. Visits to the Alpacas a further £2.50. Pre-booked groups welcome at special rates.

www.houghtonlodge.co.uk

8 Sir Harold Hillier Gardens

Jermyns Lane, Ampfield, Romsey SO32 3QP
Tel: 01794 369 318



Open all year, we offer 180 acres of inspiration and discovery for all ages. Exciting children's play features include stunning tree house, flying carpet swing and bamboo tunnels. Visit snuffling saddleback pigs in the woodlands. Beautiful themed landscapes. Excellent restaurant and tearooms, both serving hot and cold lunches.

www.hilliergardens.org.uk

Where to visit

	Page
1 Longstock Park Nursery (10 mins by car)	6
2 Longstock Park Water Garden (10 mins by car)	6
3 The Museum of Army Flying (10 mins by car)	6
4 Danebury Iron Age Hill Fort (5 mins by car)	6
5 Mottisfont (20 mins by car)	7
6 Danebury Vineyards (10 mins by car)	7
7 Houghton Lodge Gardens (7 mins by car)	7
8 Sir Harold Hillier Gardens (20 mins by car)	7

Where to shop

	Page
9 Sean Cooper Sofas Ltd	10
10 Broughton Crafts	10
11 The Bakhtiyar Gallery	10
12 The River Dental Cosmetic Clinic	10
13 Courcoux & Courcoux	11
14 Stockbridge Gallery & Framing	11
15 Lisa Sansom Interiors	11
16 The Wykeham Gallery	11
17 Bergman & Brown	11

Where to eat

	Page
18 Stokes	12
19 Purbani Restaurant	12
20 The Greyhound	12
21 The Mayfly (6 mins by car)	13
22 Fox & Hounds (13 mins by car)	13
23 Black Bean Restaurant	13
24 The Peat Spade Inn (4 mins by car)	13
25 Clos du Marquis	13

Where to stay

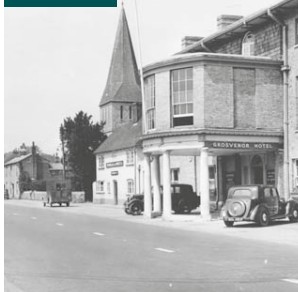
	Page
26 Yew Tree Barn (6 mins by car)	14
27 The Grosvenor Hotel	14



Circa 1904



Circa 1950



Circa 1967



Stockbridge has kept its traditional Hampshire 'broad street', lined with fine brick houses. This high street enjoys a wide variety of shops from art galleries, interior studio and boutiques to specialist food shops, including a fishmonger, greengrocer and butcher. Tea rooms, restaurants, pubs and hotels abound to suit every taste offering local fare. For those content to stroll and take in the delights of the High Street, watch the well-fed trout dart and dive at one of the many carriers of the River Test that run south under the town headed for Southampton Water.

9 Sean Cooper Sofas

Old London Road, Stockbridge
Tel: 01264 811 008



Established in 1993, Sean Cooper specialises in making high quality bespoke upholstered furniture. All pieces are handmade locally in his workshop by skilled craftsmen using traditional methods and materials.

www.seancooper.co.uk

10 Broughton Crafts

High Street, Stockbridge
Tel: 01264 810 513



A long-established craft and gift shop crammed with a huge variety of wonderful goodies. Ceramics, glass, toys, jewellery, bathroom treats, cards, mugs, wooden birds, silk flowers and much more...

www.broughtoncrafts.co.uk

11 The Bakhtiyar Gallery

High Street, Stockbridge
Tel: 01264 811 033



Masoud Mazaheri-Asadi renowned expert in Persian carpets frequently sources pieces from across Persia for The Bakhtiyar Gallery & Bakhtiyar Warehouse in London; suppliers to international decorators, retailers and London stores.

www.bakhtiyar.com

12 The River Dental Cosmetic Clinic

High Street, Stockbridge
Tel: 01264 810 818



Dental & Cosmetic Clinic

Offering a calm and relaxing atmosphere. We have reassuring, friendly staff with plenty of time to discuss your treatment needs and choices. We also provide great family dental care.

www.theriverdentalclinic.co.uk

13 Courcoux & Courcoux

Nomads House, High Street, Stockbridge
Tel: 01264 810 717



One of the leading British provincial contemporary galleries since 1985 with a worldwide clientele. Artists represented include Dame Elisabeth Frink, Sophie Ryder, Guy Taplin, Fred Yates and Claire Norrington.

www.courcoux.co.uk

14 Stockbridge Gallery & Framing

The Old Post Office, Stockbridge
Tel: 01264 810 142



Specialising in dog paintings, sculptures and a range of gifts for the discerning dog lover. Contemporary and period picture framing as well as expert restoration of oils, watercolours and prints.

www.dogsinart.com

15 Lisa Sansom Interiors

Jasmine House, High Street, Stockbridge
Tel: 01264 810 332



Specialist interior design company offering interior and architectural design services. Designer fabrics, wallpapers and paints, upholstery and bespoke furniture, soft furnishings, hand stitched curtains, home accessories, antique lighting, Lampe Berger.

www.lisasansominteriors.co.uk

16 The Wykeham Gallery

High Street, Stockbridge
Tel: 01264 810 364



The Wykeham Gallery sells work by contemporary artists within a wide price bracket and broad stylistic range and subject matter and holds approximately eight exhibitions throughout the year.

www.wykehamgallery.co.uk

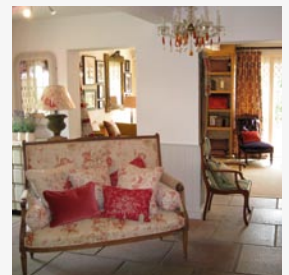
17 Bergman & Brown

The High Street, Stockbridge
Tel: 01264 811 412



Bergman & Brown offer a custom made service supported by a team of professionals. Curtains, blinds, shutters, soft furnishings, lambrequins, upholstery, stair ropes, curtain poles & accessories, fabrics, wallcoverings, lighting, furniture, gifts, jewellery, clothing and cashmere.

www.bergmanandbrown.co.uk



The annual food festival in Stockbridge celebrates its link with the River Test and in particular the brown trout. Local produce is all part of the visitor experience whether beer from nearby Romsey or buffalo burgers from Broughton Down. Winner of Google's Street View Award last year, Stockbridge was voted Britain's Best Foodie Street. Parking is available on the High Street but be warned it can be popular at certain times! Make sure to look out for these Hampshire Hospitality Award logos – the quality marquee of excellence.



18 Stokes

Stockbridge House,
High Street, Stockbridge
Tel: 01264 810 248



In the heart of Stockbridge, close to the world famous River Test. A superb venue for eating and drinking. Stokes... a little bit of London in the country.
www.stokesofstockbridge.com

19 Purbani Stockbridge Restaurant

High Street, Stockbridge
Tel: 01264 810 417 / 01264 810 151



A family run business for almost ten years, serving classic Indian and Bangladeshi cuisine. Fully licensed and air conditioned. Weddings and parties catered for. Takeaway service available. Opening times 12pm-2.30pm lunchtimes. 6pm-11.30pm evenings including Bank Holidays.
www.purbanistockbridge.com

Did you know?

// Every year Stockbridge hosts the Trout 'n About Food Festival in August. Many local pubs and restaurants will be offering taster dishes throughout the day. //



20 The Greyhound Inn



31 High Street, Stockbridge
Tel: 01264 810 833

Renowned locally for food, The Greyhound also has 7 stunning bedrooms designed in sympathy with the age of the building. With log fires wintertime and patio seating plus riverside garden summertime, try their seasonal, award winning menu all year round.

www.thegreyhound.info



21 The Mayfly



Fullerton, nr Stockbridge SO20 6AX
Tel: 01264 860 283



Wonderful riverside inn. A North Hampshire beauty spot open 10am-11pm. Food 11.30am-9pm. Daily full menu. The place to practice the art of relaxation and to eat-dine-wine. Fine selection of real ales. On A3057 between Stockbridge A30 and Andover A303.

www.themayfly.co.uk

22 Fox and Hounds

Crawley, Winchester SO21 2PR
Tel: 01962 776 006



Situated in the centre of the lovely picturesque village of Crawley, the Fox & Hounds have a 50-seater restaurant, a bar and beer gardens. Our varied menus combine traditional freshly prepared homecooked food with dishes from around the world... There are also four letting chalets for accommodation.

www.foxandhoundscrawley.co.uk

24 The Peat Spade Inn

Village Street, Longstock SO20 6DR
Tel: 01264 810 612



The Peat Spade is the ideal country retreat situated on the banks of the River Test in the heart of the Hampshire countryside. Its cosy bar, locally sourced menu and sumptuous bedrooms welcome both locals and those from further afield seeking a taste of bygone England.

www.peatspadeinn.co.uk

25 Clos du Marquis

London Rd, nr Stockbridge SO20 6DE
Tel: 01264 810738



French Restaurant - French Gourmet Pantry Cookery School. "The kind of good, local traditional restaurant you are always looking for in France but can never find or it's shut!" as quoted in The New English Cook by Rose Price July 25 2009. France on your doorstep.

www.frenchgourmetpantry.co.uk
www.closdumarquis.co.uk

23 Black Bean Restaurant

New Street Stockbridge
Tel: 01264 810 414



Hampshire's premier oriental restaurant. Beautiful converted granary barn with separate bar area. Furnished with Thai and oriental antiques. Excellent, wide selection of lovingly prepared Thai, Cantonese and Malaysian dishes. Enjoy the experience.

www.black-bean.co.uk



26 Yew Tree Barn


Yew Tree Cottage, Houghton, Stockbridge
SO20 6LN **Tel: 01794 388 258** 
Mobile: 07710 503 416



Yew Tree Barn is located within the tranquil village of Houghton, Hampshire. Nestled within the beautiful Test Valley, famous for its trout and fly fishing. Ideally situated for the discerning traveller, fishermen and those seeking other country pursuits.

www.yewtreebarnbandb.co.uk

27 The Grosvenor Hotel

High Street, Stockbridge
Tel: 01264 810 606 



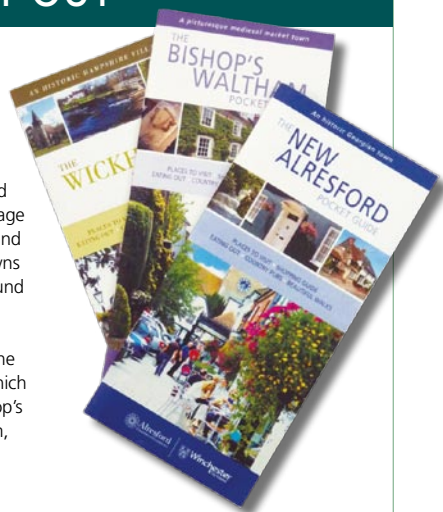
An 18th century Inn with history in abundance. 26 ensuite bedrooms. Delicious food. 2 courses for £13.00 including glass of wine. Alfresco dining. Weddings and parties catered for. Children and pets welcome.

www.thegrosvenor-hotel.com

GET THE MOST FROM YOUR DAY OUT

The **Stockbridge Pocket Guide** is the fourth in an expanding series of pocket guides designed to promote the local attractions and shops and help encourage more visitors to come and explore the historic towns and villages in and around Winchester.

Check out the rest of the guides in the family, which include Alresford, Bishop's Waltham and Wickham, and their surrounding areas.



These guides are a must for any visitor, for further information visit www.testvalley.gov.uk/tourism and www.visitwinchester.co.uk

Test Valley Borough Council is pleased to support the production and distribution of this Stockbridge Pocket Guide, as part of its commitment to encourage visitors and to promote business within the Borough. For more information please contact the Council's Economic Development Officer at dgleave@testvalley.gov.uk.

Accommodation

For a full list of assessed accommodation in the Stockbridge area visit www.testvalley.gov.uk


If you need more help, contact the Romsey Tourist Information Centre, 13 Church Street, Romsey SO51 8BT
Tel: 01794 512 987
Email: jwest@testvalley.gov.uk
www.testvalley.gov.uk/tourism


Churches

St Peter's Church
The Rev. Jonathan Watkins
The Rectory
11 Trafalgar Way
Stockbridge
Tel: 01264 810 810

Key

 Wheelchair access

 Partial wheelchair access

 The establishments carrying this symbol were awarded a Hampshire Hospitality Award in 2010/11. Visit www.visitsoutheastengland.com for the most up-to-date information.

Circa 1907

Fishing

Fishing Breaks
The Mill
Heathman Street
Nether Wallop
Stockbridge SO20 8EW
Tel: 01264 781 988
info@fishingbreaks.co.uk
www.fishingbreaks.co.uk

Police Station

Stockbridge Police Station
High Street, Stockbridge

The enquiry office has no set opening times, however when officers are on duty in the station the office will be open to the public. When the office is closed please use the phone situated next to the front door.

Surgeries

Stockbridge Surgery
New Street
Stockbridge
Tel: 01264 810 524

Veterinary Services

Hawksdown Veterinary Centre
Windover Farm
Longstock Rd
Stockbridge
Tel: 01264 810 281



Travelling to Stockbridge

By Road

Stockbridge is situated on the **A30** London to Devizes road between Winchester and Salisbury.

By Train

7.5 miles from Mottisfont and Dunbridge Station. 8 miles from Andover Station. 10 miles from Romsey Station. Telephone **0845 748 4950** for National Rail Enquiries, or go to www.nationalrail.co.uk for train times.

By Bus

Regular services from Andover, Salisbury and Winchester - Stagecoach **0845 121 0190** or www.stagecoachbus.com

Service from Romsey at school times (school days only) - Wilts and Dorset **01983 827 005** or www.wdbus.co.uk

Carshare scheme for pre-booked passengers from Wherwell, Chilbolton, King's Somborne and Houghton on Tuesdays, Wednesdays and Fridays. **01962 846 786** or www.hants.gov.uk/taxishares

Free bus on Sundays and public holidays May-September from Romsey via Timsbury, Kimbridge, Mottisfont and Houghton operated by Test Valley Community Services www.threeriversrail.com

Facilities

Toilets (including disabled) are situated in the High Street • Car parking is free in the High Street at all times including weekends and Bank Holidays

Further information

Romsey Tourist Information Centre, 13 Church Street, Romsey SO51 8BT
Tel: 01794 512987 | Email: jwest@testvalley.gov.uk
www.testvalley.gov.uk/tourism

ANGUS BRAIME



If you would like to receive this leaflet in another format, tel: 01794 512987 or email: dgleave@testvalley.gov.uk